

Toilet indicator

Knud Holscher
collection

Product

5L90, snap-on cover, cc 38mm.

Tender text

Knud Holscher collection, Toilet indicator, 5L90, snap-on cover, cc 38mm. Manufactured in the highest quality marine grade, AISI 316 stainless steel, protecting against high levels of corrosion. 20-year warranty.

Re-handle®

[Re-handle your product here](#)

Re-handle® this product (does not apply to coated items) to prolong its life span up to 100 years, lowering the Global Warming potential (CO2) between 54-91% depending on the product.

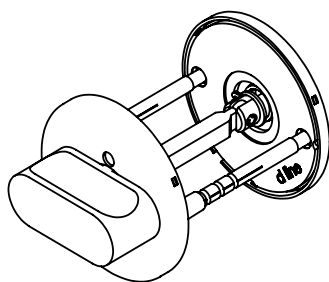
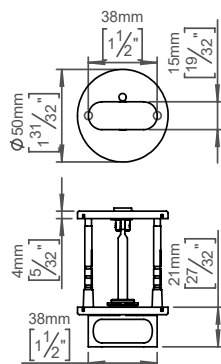
Product specification

Dimensions: 50x50x23mm

Spindle: 5x5mm

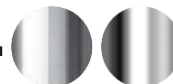
Material: stainless steel AISI 316

Surface finish: satin grain 320, crafted by hand

[20-year warranty \(5 years for coated items\)](#)

Available finishes

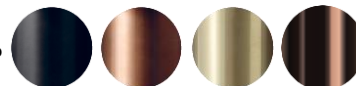
Solid metal



Satin steel

Polished steel

PVD



Charcoal

Copper

Brass

Bronze

Powder coated



Black

Spare parts/
accessories

14296174107 - Sectioned bolt set M4x110mm

Mounting

<https://dline.com/mounting-instructions/>

Product care

d line products are produced in the highest quality marine grade AISI 316 stainless steel. To sustain the unique d line finish please follow the below instructions:

- Wash down the surfaces using soapy water or mild detergent
- Always thoroughly rinse off with clean water

- To complete the cleaning procedure dry/polish the surface with a soft dry cloth

Please do not use scouring powder, steel wool, chloride based detergents or other aggressive cleaning products as these may damage the surface.

If spots or corrosion appear on the surface it is not due to the stainless steel quality, but to impurities in the environment, aggressive conditions or improper or insufficient cleaning.