

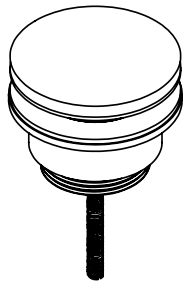
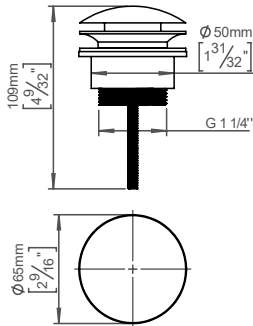
Waste, push-open

Qtoo collection

Product 10-100mm, push to open/close.

Tender text QTOO collection, waste push open.
Manufactured in the highest quality AISI 304 stainless steel. 20 year warranty.

Product specification Universal with and without overflow
Range: 10-100mm
Material: AISI 304 stainless steel
[20-year warranty \(5 years for coated items\)](#)



Available finishes



Spare parts/ accessories

Mounting <https://dline.com/mounting-instructions/>

Product care
d line products are produced in the highest quality AISI 304 stainless steel. To sustain the unique d line finish please follow the below instructions:
• Wash down the surfaces using soapy water or mild detergent
• Always thoroughly rinse off with clean water
• To complete the cleaning procedure dry/polish the surface with a soft dry cloth
Please do not use scouring powder, steel wool, chloride based detergents or other aggressive cleaning products as these may damage the surface.
If spots or corrosion appear on the surface it is not due to the stainless steel quality, but to impurities in the environment, aggressive conditions or improper or insufficient cleaning.